



GLOBAL INFINITY

**EARN UNLIMITED RETURNS**

# WHAT IS MMM GLOBAL INFINITY

MMM operates as a community where members help each other directly without any central account or intermediary. It is not a bank, online business, investment program, or company.



## **NOT A BANK**

No deposit taking or interest payment, strictly donations.



## **NOT AN INVESTMENT**

No ROI as no money is invested.



## **NOT A BUSINESS**

Money flows directly into recipient's bank.

<https://mmmgi.com>

# WHAT IS MMM GLOBAL INFINITY



**Helping people by doing Charity Works.**



**Using SPARE Money as donations to provide help in the community.**



**It only provides System to facilitate our Donations to other participants.**



**Donation Exchange Program given voluntarily by all participants.**



**Participants do not transfer money to MMMGI since it has no Central account.**



**It is a community of people who want to be financially free.**

<https://mmmgi.com>

# HOW DOES MMMGI WORK?



**Everything is very simple: one participant asks for help - another one give help.**



**The only thing that MMMGI demands from its participants is to be honest and kind to each other.**



**You give financial help when you able to do it, you ask for financial help when you need it.**

# MMMGI IDEOLOGY



Learn about our mission to assist individuals through charitable efforts and understand our core values on contributing your extra funds to support our beneficiaries financially.

## DONATIONS



The minimum MMMGI Donation amount (PH) is \$10, with a maximum amount of \$30000. The withdrawal rules in GH are the same.

<https://mmmgi.com>

# ACCEPTED CURRENCIES

USD, CNY (Bitcoin), USDT (TRC-20), BTC, TRX (Tron)



# RECOMMITMENT & RECRUITMENT



**There are no recommitment obligations** in order to withdraw your earnings. You don't have to repeatedly deposit money to withdraw your mavro.



**The members of the community cannot be compelled to bring in new participants.** However, knowing that MMM's expansion depends on attracting new members, it motivates existing members to refer others and receive bonuses.

# DONATION PLANS & INTEREST

1

## **SIMPLE PLAN**

- **Accrued interest: 30% per month, 1% daily**
- **Risk level: Average**
- **No expiration date**
- **You can withdraw your deposit without any restrictions.**

2

## **DOUBLING PLAN**

- **Accrued interest: 3% daily for the first 32 days, 2% daily from day 33 to day 90**
- **Risk level: Above average**
- **Expiration: 90 days**
- **Your deposit will be frozen for 90 days, but you can still receive daily interest payments. After 90 days, you can withdraw your principal amount.**



# DONATION PLANS & INTEREST

3

## OPTIMAL PLAN

- Accrued interest: 100% for the first month, 30% starting from the second month
- Risk level: Minimal (0.1%)
- Expiration: 12 months
- You cannot withdraw the main capital, but you will receive interest payments.

4

## ULTRA-RELIABLE PLAN

- Accrued interest: 10% per month
- Risk level: Low
- No expiration date
- You can withdraw your deposit without any restrictions.

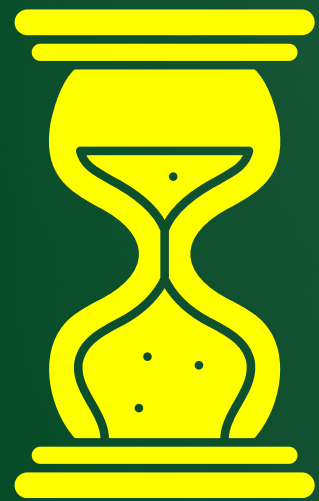
# DONATION PLANS & INTEREST

5

## **AFRICAN PLAN**

- **Accrued interest: 100% per month**
- **Risk level: Average**
- **No expiration date**
- **You can withdraw your deposit without any restrictions.**

# PROVISIONING ORDERS



**10-20% of orders**  
are processed immediately.



**80-90% of orders**  
are fulfilled within 5 to 10 days or based  
on system demand

# 10% REFERRAL BONUS



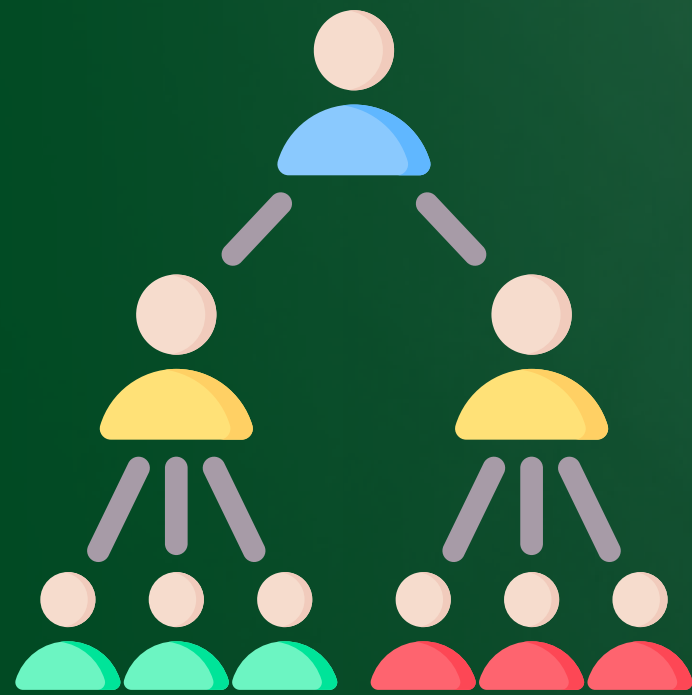
**Earn a 10% bonus for every new member you refer to the System. There is no limit to how many direct referrals you can make.**



**Once your Direct Referral has made a deposit, you will instantly receive the Direct Referral Bonus.**

# 5% GUIDER'S BONUS

The MMMGI Guider has the ability to create their own multi-level structures and receive a bonus from each donation made by participants in their structures. The bonus amount that the Guider receives depends on their level in the Community. The bonus percentages for each level are as follows:



- 1st Level: 5%
- 2nd Level: 3%
- 3rd Level: 1%
- 4th Level: 0.25%
- 5th Level: 0.1%
- 6th Level and beyond: 0.1% indefinitely.

# GUIDER'S BONUS REQUIREMENTS



To qualify for a guider's bonus, you must refer at least 10 direct downlines who have 10 active PH.

# TESTIMONIAL BONUS



**10% bonus** for video testimonials showing your face.



**5% bonus** for written testimonials

# OFFICIAL MIRRORS MMM OFFICE



**Main MMM Global office login:**

**[mmmoffice.org](http://mmmoffice.org), [mmmoffice.ac](http://mmmoffice.ac)**

**[mmmoffice.net](http://mmmoffice.net), [mmmofoice.com](http://mmmofoice.com)**

GLOBAL INFINITY

<https://mmggi.com>